



CITY OF NEW ORLEANS
Department of Public Works

Recovery Roads Program
St. Claude Paving Only
Pre-Construction Community Meeting

1 Sept. 2015

CITY OF NEW ORLEANS
Mitchell J. Landrieu, Mayor

Agenda

- Welcome – Greg Lawson, Mayor’s Office of Neighborhood Engagement
- Project Overview – Mark Penny, Dept of Public Works
- Breakout Session– Greg Lawson, Mayor’s Office of Neighborhood Engagement

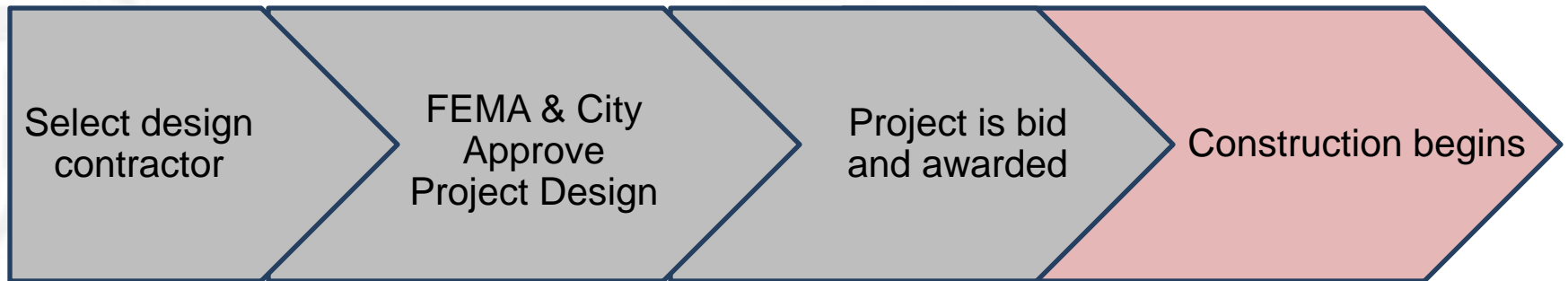
Recovery Roads Program Overview

- This is part of a larger City-wide, multi-year infrastructure repair/recovery effort funded by FEMA.
- The intent of the Recovery Roads Program is to restore the roads and sidewalks in the City to their pre-Katrina condition.
- This program is managed on a neighborhood-by-neighborhood basis.

Recovery Roads Program

- Damages were identified by the Department of Public Works and through citizen input.
- Joint FEMA/City teams initiated city-wide road storm damage assessments in Fall 2010.
- All 72 neighborhood assessments were completed in Spring 2012.
- Approximately 35,000 additional sites have been identified for repair citywide.
- As of May 2013, 70 Project Worksheets have been approved and approximately \$280M obligated.
- Phase II construction began in the summer of 2012 and will likely continue through 2021.

Project Design & Construction Process (Phase II)



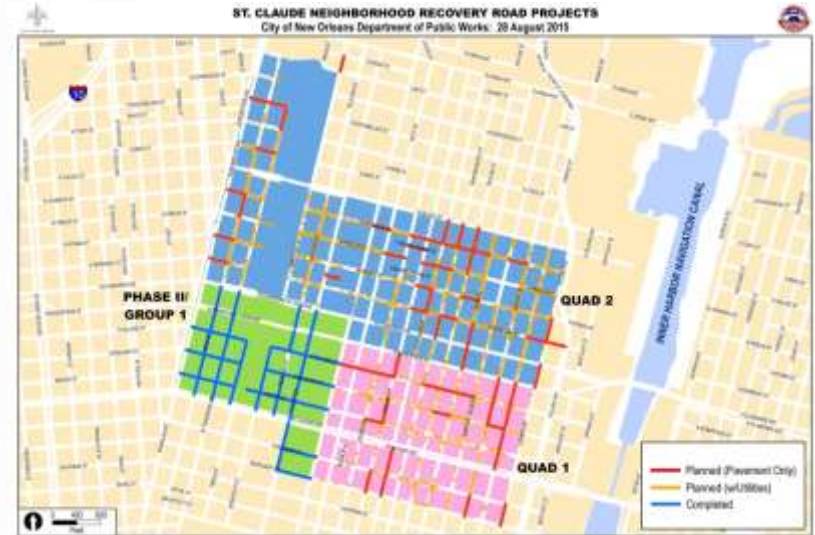
- Phase II work is also coordinated between the City, Sewerage and Water Board of New Orleans, State, FEMA and utilities such as Entergy, Cox Communications and AT&T.

St. Claude

Recovery Roads Projects

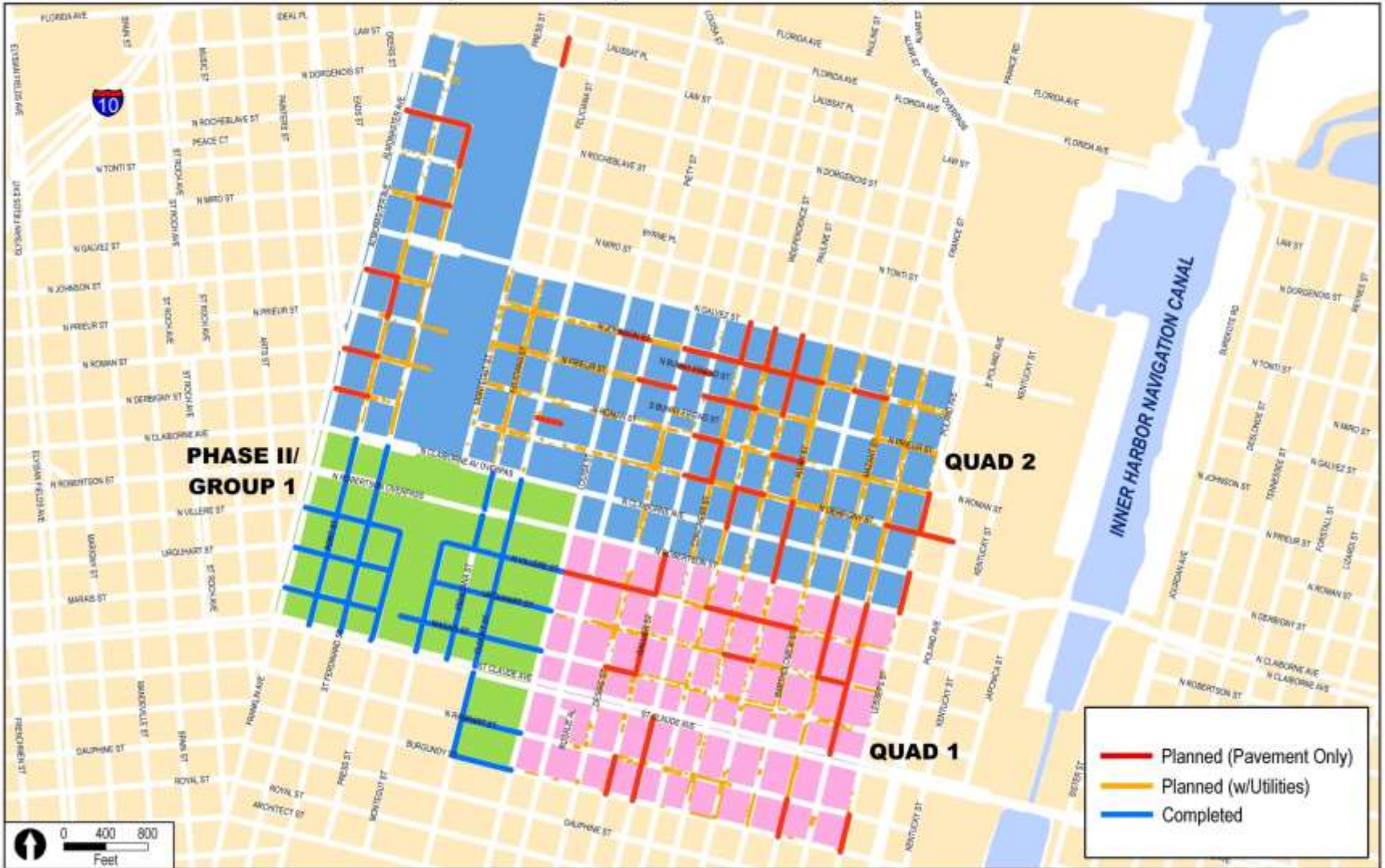
St. Claude Recovery Roads work is split into five construction contracts to accelerate construction. Total planned investment via Recovery Roads is approx. \$23 million.

1. 1300 block of Feliciana St. – Completed
2. St. Claude Group 1. – Completed
3. St. Claude Paving Only – Construction
4. St. Claude Quad 1 – Planned
5. St. Claude Quad 2 - Planned



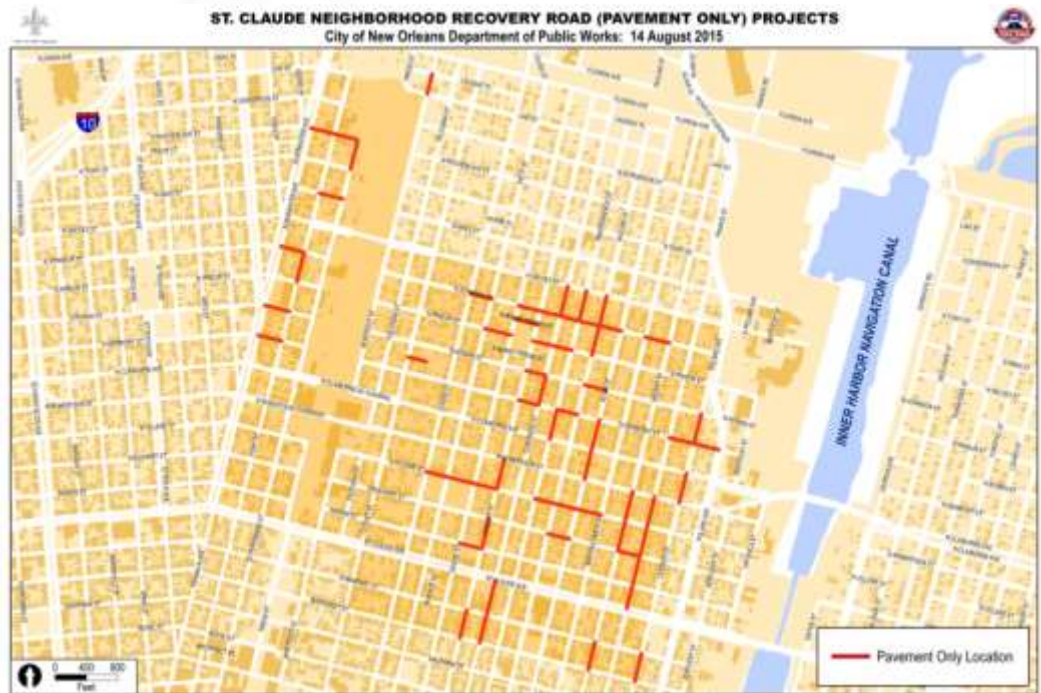
St. Claude Neighborhood

ST. CLAUDE NEIGHBORHOOD RECOVERY ROAD PROJECTS
City of New Orleans Department of Public Works: 28 August 2015



St. Claude – Paving Only

- Designed by HNTB Corp.
- Construction by Boh Bros. Construction, LLC.
- Approximately \$5.6M budget
- Construction is scheduled to begin mid-Sept. 2015 and will last through spring 2016



Project Limits:

- St. Claude Ave.
- Almonaster Ave.
- Florida Ave.
- France St./Poland Ave.

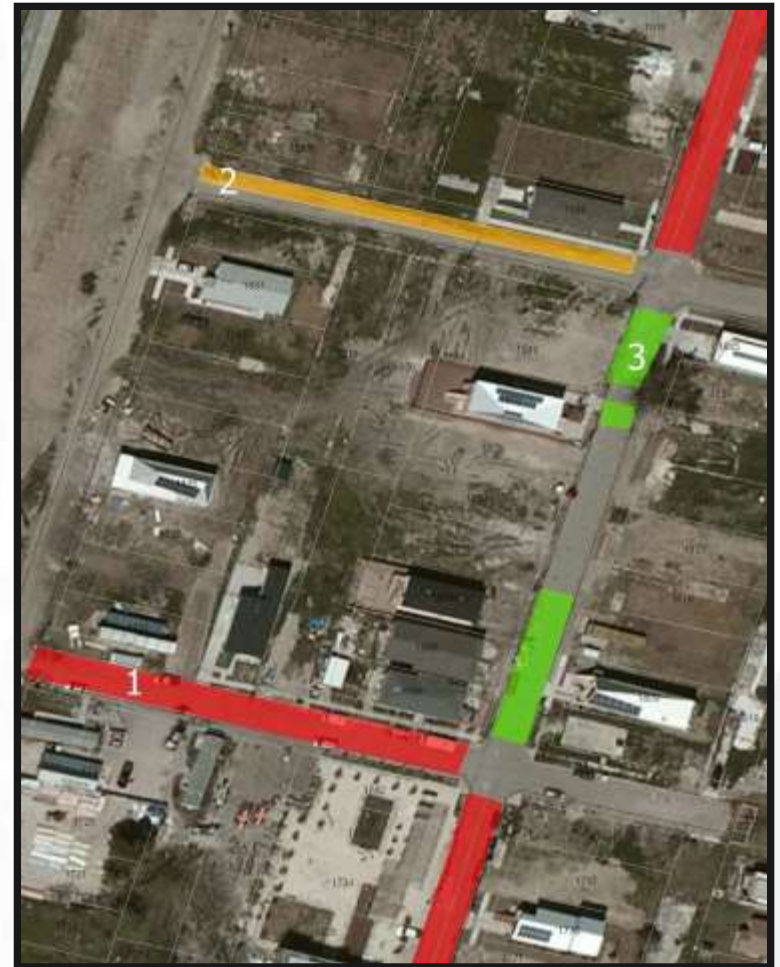
Types of Construction

1. Full Depth Pavement Repair
2. Resurfacing
3. Patch Repairs (roadway and sidewalk)

Type of Construction

1. Full Depth Pavement Repair (red)

- **Eligible Scope:** Full depth replacement of pavement for the entire length and width of block. May include replacement of sub-surface SWB utilities.
- **End Result:** A new street (either asphalt or concrete) is constructed, to include base and pavement.



* GIS visual example from Lower Ninth Ward neighborhood displays all (3) types of paving work in the range of a single block.

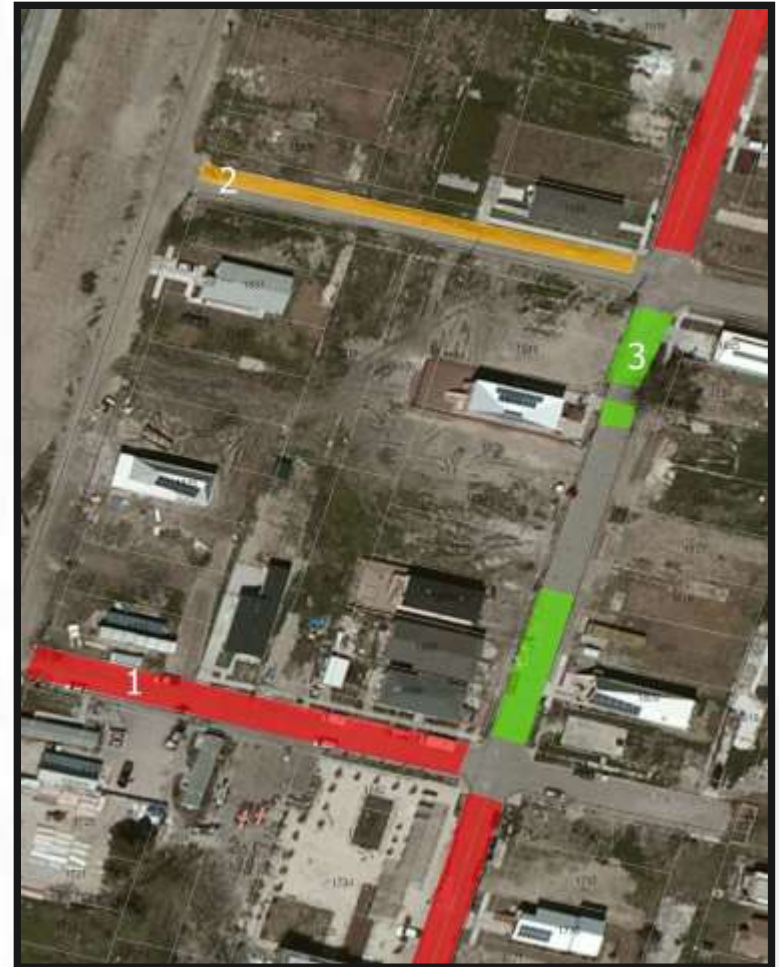
CITY OF NEW ORLEANS
Mitchell J. Landrieu, Mayor

Type of Construction

2. Resurfacing (amber)

Eligible Scope: The uppermost layer of street pavement (asphalt or concrete) is determined as eligible for repair. Size of the repair area varies.

End Result: A new top layer of pavement (either asphalt or concrete) is placed on specific areas of the street.



* GIS visual example from Lower Ninth Ward neighborhood displays all (3) types of paving work in the range of a single block.

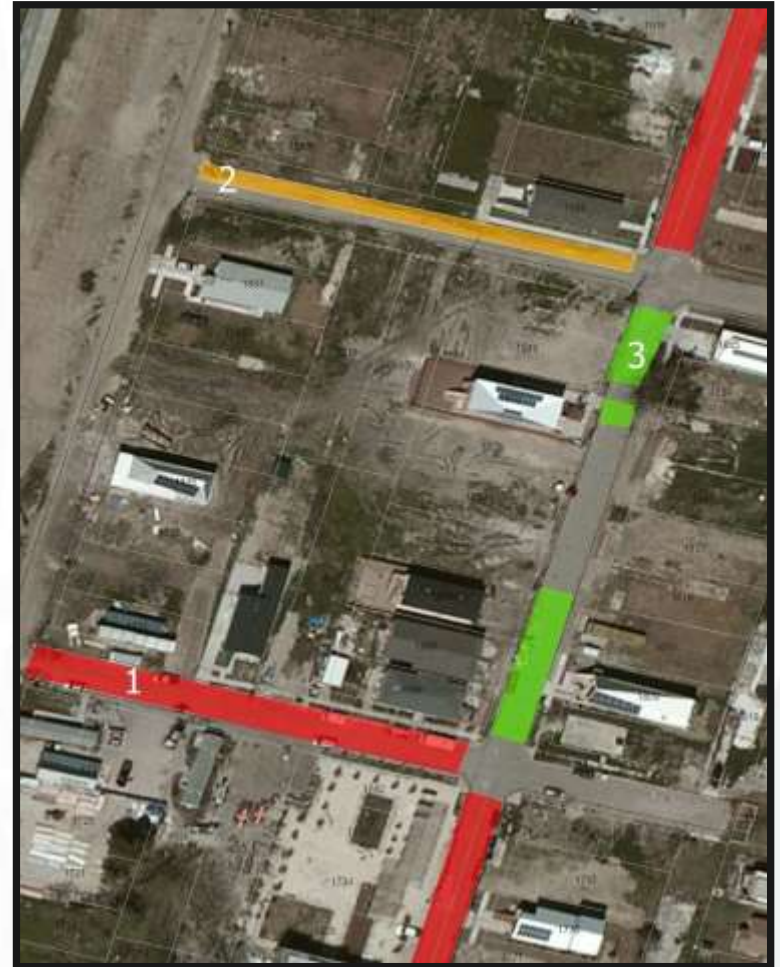
CITY OF NEW ORLEANS
Mitchell J. Landrieu, Mayor

Type of Construction

3. Patch Repairs (green)

Eligible Scope: Only small areas on each block determined by FEMA as eligible for repair. Size of determined repair areas varies.

End Result: Damaged pavement (either asphalt or concrete) and sidewalks on only specific areas of the street is replaced with new pavement or concrete sidewalk and American with Disabilities Act-compliant curb ramps.



* GIS visual example from Lower Ninth Ward neighborhood displays all (3) types of paving work in the range of a single block.

CITY OF NEW ORLEANS
Mitchell J. Landrieu, Mayor

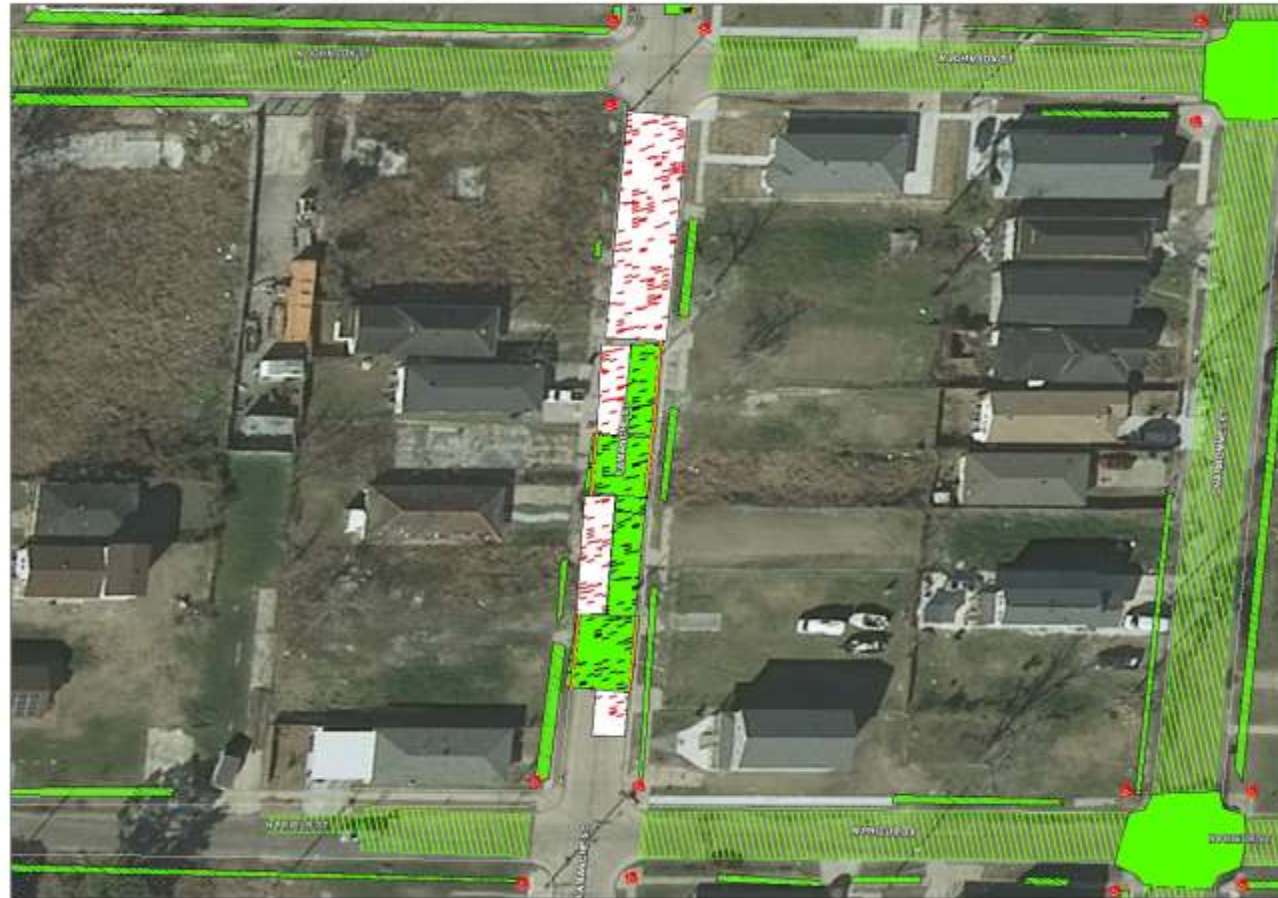
Eligible Repair Sites

LOWER 9TH WARD PW DAMAGES: 1900 LAMANCHE ST



Additional Possible Repairs

LOWER 9TH WARD DAMAGES: 1900 LAMANCHE ST



- ADDITIONAL DAMAGES**
- Handicap Ramp Request
 - Adjust CBD/MH Request
 - Curb Request
 - Asphalt Street
 - Composite Street
 - Concrete Street
 - Driveway
 - Intersection
 - Sidewalk
- PW DAMAGES**
- PW Adjust CBD/MH
 - PW Damaged Ramp
 - PW Other Damaged
 - PW Curb Damages
 - Asphalt Street
 - Composite Street
 - Concrete Street
 - Driveway
 - Intersection
 - Sidewalk
 - Existing Curb Line
 - State FHWA
 - Local FHWA

Scale: 00KSEP (2010 Imagery), JCARS (GIS data), CNG (street data)



List of Eligible Repairs

1. RecoveryRoads.nola.gov
2. Program
3. List of Eligible Repairs



Existing Conditions



Existing condition of the 1700 block of Alvar St. on Aug. 28, 2015.

Future Conditions *



* Marais St. from Delery St. to the Parish Boundary was re-paved in the summer of 2012.

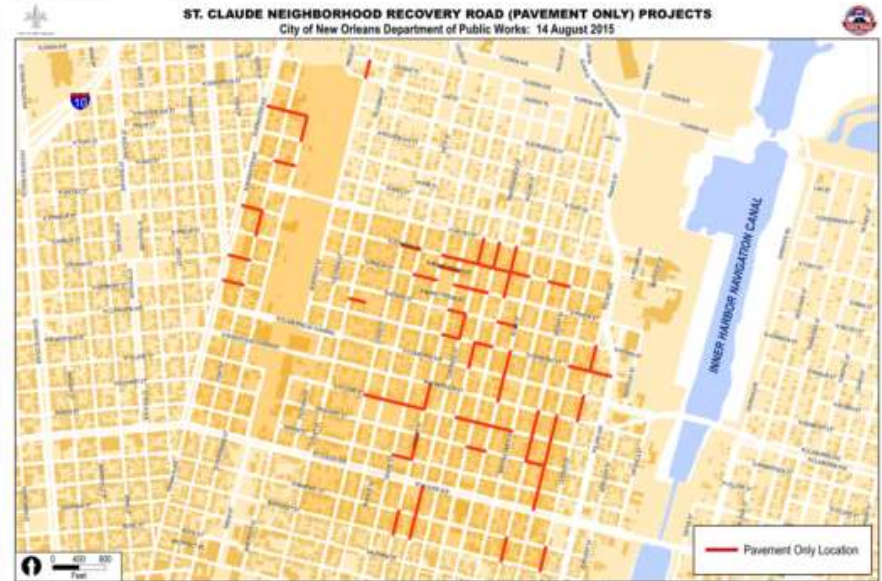
Schedule

- Start: Sept. 15, 2015
- End: Spring 2016

In general:

- Four crews will be working simultaneously throughout the neighborhood.
- Work will be performed Monday through Friday, 7:00 a.m. to 5:30 p.m.

* All schedules are subject to change and weather dependent.



What to Expect During Construction

Temporary construction inconveniences:

- Limited access to areas
- Traffic re-routing
- Limited street parking
- Movement of heavy equipment
- Dust
- Safety signage
- Safety sounds
- Additional equipment



What to Expect During Construction

- Regular e-mail status updates
- Sign in tonight to be added to the e-mail list
- Contact DPW with questions:
Cheryn Robles
504.658.8046
RecoveryRoads@nola.gov



Resources



RecoveryRoads.nola.gov



www.nola.gov/dpw



www.swbno.org



RoadWork.nola.gov



Breakout Session